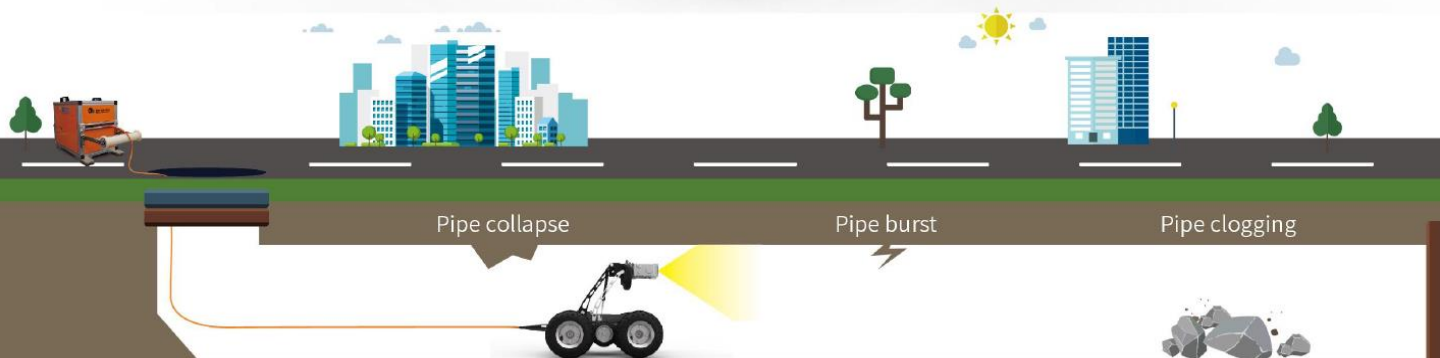




Dolphin-L2

Inspection solution starting from DN200



Technical Specification

tractor	Deployment range	from DN200 upwards
	Steerable	yes
	Drive	6-wheel driven
	Inclination sensor	yes
	Temperature sensor	yes
	Pressure sensor	yes
	Overturn protection	yes
	Lowering arm	In-build
	Back-eye camera resolution	full HD; 2.1 Megapixels; 1920x1080P
	Rear illumination	2 LED
	Protection class	IP68, up to 10m water depth
	Ambient temperature range	-10~55°C
	Wheel sets	4inch, 5inch, 6inch, 9inch, 10inch (optional)
	Dimension	L769xW395xH503mm (10-inch wheel sets, full elevator)
	Weight	27.6kg (10-inch wheel sets)
Camera	Pan & Tilt	360° endless rotation, 180° panning range
	Camera resolution	full HD; 2.1 Megapixels; 1920x1080P
	Optical zoom	10 X
	Illumination	4 LED
	Auxiliary light	10 LED
	Elevator	motorized
	Function	defog
Cable drum	Drive	motor-driven
	Cable length	200m
	Cable tension	250kg
	Winding aid	yes
	Meter count	yes, ±5mm accuracy
	Power	Battery, 10h; power cord (optional)
	Communication	Wi-Fi connection to control pad
	Protection class	IP65
	Dimension & weight	670x410x490mm , 51.7kg
Control pad	OS	Android
	Display	10.1 inch
	Storage	64G
	Battery	8h
	Size & weight	102x153x63mm, 280g
	Communication	Bluetooth 6m
	Display information	date, time, tractor position angle, inclination, distance, inspection video, text input, overturn alert and tractor control